

Sorbster® Se-1

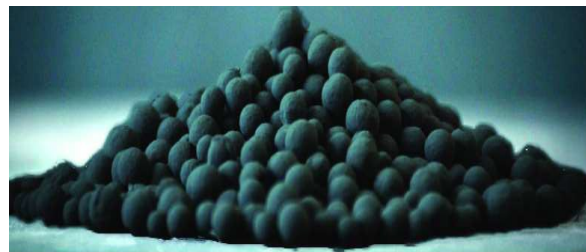
Ecologically Effective Contaminants Adsorption

Adsorbent Media for Selenium Removal

Sorbster® Se-1 is a highly functionalized, enriched alumina media that covalently bonds soluble Selenium and other trace contaminants to its active sites. It is suitable for use across a broad range of water qualities.

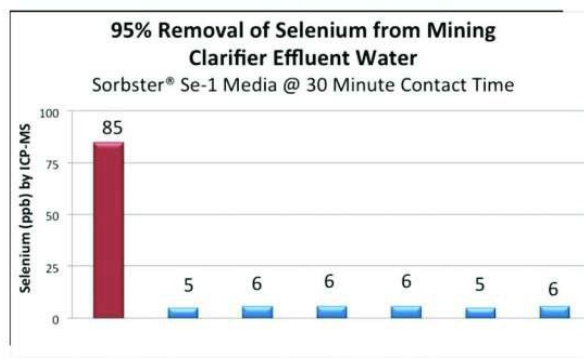
Features and Benefits

- Effectively removes soluble Selenite, Selenate and Selenocyanate in a wide range of process streams
- Produces no ancillary water streams that require additional treatment, handling or disposal
- Media passes the EPA TCLP test and allows for nonhazardous disposal options, reducing total cost to treat
- Requires fewer change-outs than competing media, maximizing ROI
- Active and diverse chemistry allows Sorbster® Se-1 to selectively capture and chemisorb Selenium in both the oxyanion and cation forms, eliminating expensive process steps required by some competitive solutions
- Does not support bacterial growth
- May be used as a polishing media to reach ultra-low-level concentrations where existing solutions cannot perform to new permits
- Also removes Molybdenum, Mercury, Arsenic, Selenite, Copper, Fluoride, Selenate, Cadmium, Thallium, Silica, Tin, Barium, Hexavalent Chromium, Antimony, Cobalt, Vanadium, Lead, Zinc, Boron, Nickel and Cyanide



Product Specifications

Particle Size	Nominal 1/8" Granules
Bulk Density lbs./ft ³	60
Moisture Content	<10%
pH Range	3-10
Flux Rate	1-5 GPM/ft ²
Empty Bed Contact Time	20-120 minutes
Back Wash Bed Expansion	5%



Sorbster Inc.

1311 Chardon Road
Euclid, OH 44117
Tel: 216-533-2343

Contact: Brimman Frazer
Email: brimman@sorbster.com